



November 2017

Demolition Degree Launched

The University of Wolverhampton has launched the first demolition management master's degree programme in the UK.

Studies start this term at the University's School of Architecture & Built Environment.

Accredited by the Institute of Demolition Engineers (IDE), the course has been designed in conjunction with industry specialists and will be delivered by both academics and demolition experts, such as previous ICM Manager of the year winner John Woodward of C&D Consultancy.



Above: **Paul Hampton (University of Wolverhampton), Patricia Stoneczny, Richard Dolman (both AR Demolition) and John Woodward (C&D Consultancy)** John Woodward is a member of our Institute.

Paul Hampton, head of built environment at the University of Wolverhampton, said: "We are confident this will provide a significant offer

to the demolition industry and the wider built environment sector. In particular, this will address the sector skills gaps and provide a meaningful step change for recruiting future talent."

Mick Ulyatt, chair of the IDE education committee, said: "The formal accreditation of this degree is an historic landmark for the development of demolition engineering and is an important milestone in trying to get more young people interested in pursuing a career in this field. We have no problem attracting labourers and operatives, which is great. however, we want youngsters looking to become chartered demolition engineers, senior managers and the leaders of the future.

"There isn't anything like this currently in the UK

+++++++

+++++++

+++++++

America

Cities across the United States are in the middle of a multi-year boom in construction, fuelled by local—and foreign—investment and a need for thousands of new apartments.

The surge comes a decade after the Great Recession halted construction and stalled projects nationwide.

According to a [Stateline analysis](#) of inflation-adjusted data from the U.S. Bureau of Economic Analysis, the construction industry's impact on U.S. gross domestic product has grown by more than 21 percent since its recession low point in 2011, and in 2016, construction's **contribution** to the U.S.

economy soared above \$650 billion for the first time since 2008.

+++++++ ++++++ ++++++

Vista Tower in Chicago



The Windy City is in the midst of a building boom, with Curbed Chicago **mapping** no fewer than 44 high-rises currently under **construction**. The windfall has also spread out of the Loop and into the city's neighbourhoods; construction hotbeds like **Milwaukee Avenue** will see upward of **3,000 new apartment units** over the next few years.

But no project is bigger than the **Vista Tower**, a 93-story giant that will become the third-tallest tower in Chicago when it's completed in 2020. Foundation work started late last year on the **Studio Gang**-designed building, and it will be the tallest tower in the world designed by a woman-led firm (overtaking Studio Gang's **Aqua**, which is just around the corner).

Vista Tower also has some unique backing: A Chicago-based developer teamed up with a Chinese developer, signalling the type of foreign investment that is much more common in cities like Miami and New York.

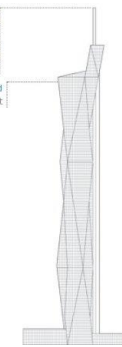
+++++++ ++++++ ++++++

Kuala Lumpur

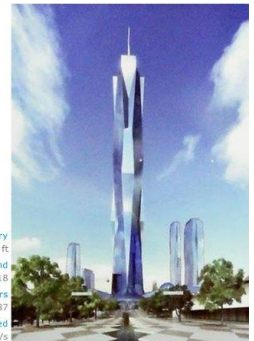
- **KL 118** (above) is well underway and

progress has been swift on this

Height: To Tip
635 m / 2,083 ft
Height:
Architectural
635 m / 2,083 ft
Height: Occupied
493.9 m / 1,620 ft



Height: Observatory
476.7 m / 1,564 ft
Floors Above Ground
118
of Elevators
87
Top Elevator Speed
10 m/s



RM3.6bn+ commercial tower that will

- reshape the skyline of Kuala Lumpur. At 118 storeys there is no where it won't be seen and UEM, Bauer and Samsung are all playing key parts to make this happen.
- Construction has started on the **Jimah Coal Power station** - a 2000 MW RM2.4bn project owned by Tenaga Nasional Bhd. Big international players are involved in the project including Hyundai (Korea), Toshiba (Japan) and HSL (Singapore)
- Over RM 1.3bn of Systems works packages for **MRT Line 2** have been awarded to Colas Rail and Sapura-EVD. This work is for the engineering, procurement, construction and testing of power supply for the SSP Line.

+++++++ ++++++ ++++++

If you have a project you are working on, that you can send me please share it with us, our members have often sent in items of interest, contact me below.

+++++++ ++++++ ++++++

Mike Bishop. FICnstM. Editor
Overseas Secretary. Governor
01962 713000 bishop1ue@btinternet.com